

(s|S)-?(b|B)ox and other useful statistics on the ePrint Archive

Stefan Kölbl

DTU - Technical University of Denmark

March 10th, 2015



(s | S) - ? (b | B) ox Statistics

Talks on Monday

- ▶ S-Box
- ▶ S-box
- ▶ Sbox

(s | S) - ? (b | B) ox Statistics

Talks on Monday

- ▶ S-Box
- ▶ S-box
- ▶ Sbox

Solution

The majority is always right!

$(s|S) - ?(b|B)$ or Statistics

What is the easiest way to find out

(s|S)-?(b|B)ox Statistics

What is the easiest way to find out

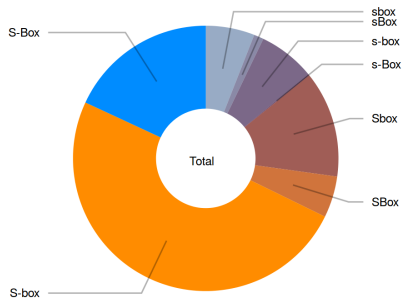
- ▶ Download all pdf files from
`http://eprint.iacr.org/complete/`

(s|S)-?(b|B)ox Statistics

What is the easiest way to find out

- ▶ Download all pdf files from <http://eprint.iacr.org/complete/>
- ▶ Parse text from pdf

(s|S)-?(b|B)ox Statistics



Variant	Papers	Share
S-box	709	49.68%
S-Box	258	18.08%
Sbox	185	12.96%
s-box	99	6.94%
sbox	85	5.96%
SBox	72	5.05%
sBox	17	1.19%
s-Box	2	0.14%

$(s|S) - ?(b|B)$ ox Statistics

Inconsistent use of $(s|S) - ?(b|B)$ ox

- ▶ 550 papers use one variant

$(s|S) - ?(b|B)$ ox Statistics

Inconsistent use of $(s|S) - ?(b|B)$ ox

- ▶ 550 papers use one variant
- ▶ 258 papers use two variants

(s|S)-?(b|B)ox Statistics

Inconsistent use of (s|S)-?(b|B)ox

- ▶ 550 papers use one variant
- ▶ 258 papers use two variants
- ▶ 100 papers use three variants

(s | S) - ? (b | B) ox Statistics

Inconsistent use of (s | S) - ? (b | B) ox

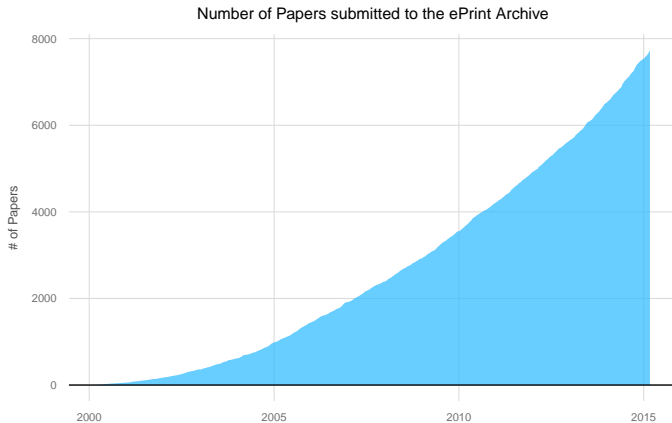
- ▶ 550 papers use one variant
- ▶ 258 papers use two variants
- ▶ 100 papers use three variants
- ▶ 21 papers use four variants

(s|S)-?(b|B)ox Statistics

Inconsistent use of (s|S)-?(b|B)ox

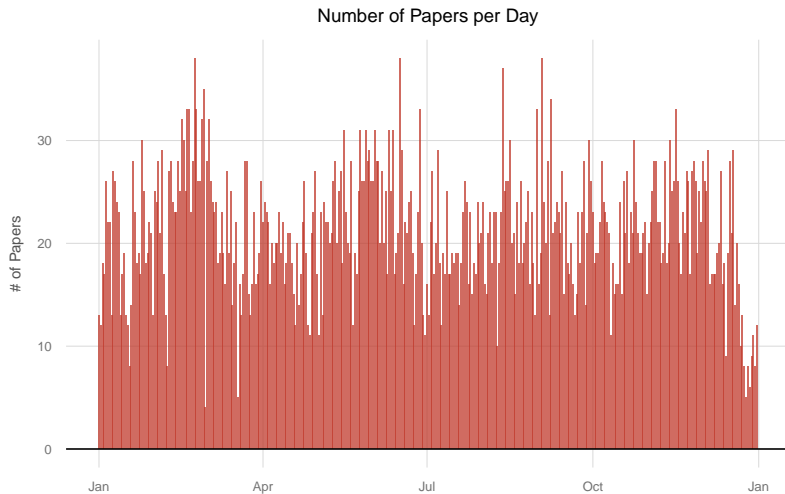
- ▶ 550 papers use one variant
- ▶ 258 papers use two variants
- ▶ 100 papers use three variants
- ▶ 21 papers use four variants
- ▶ 3 papers use five variants

ePrint Archive

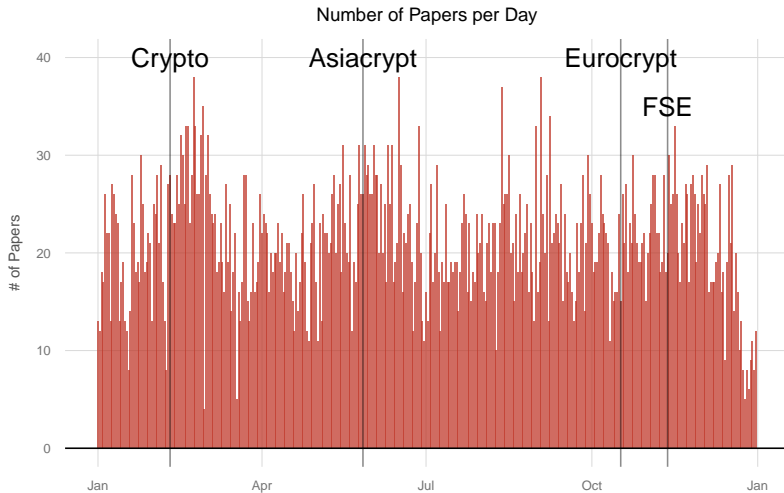


Growth

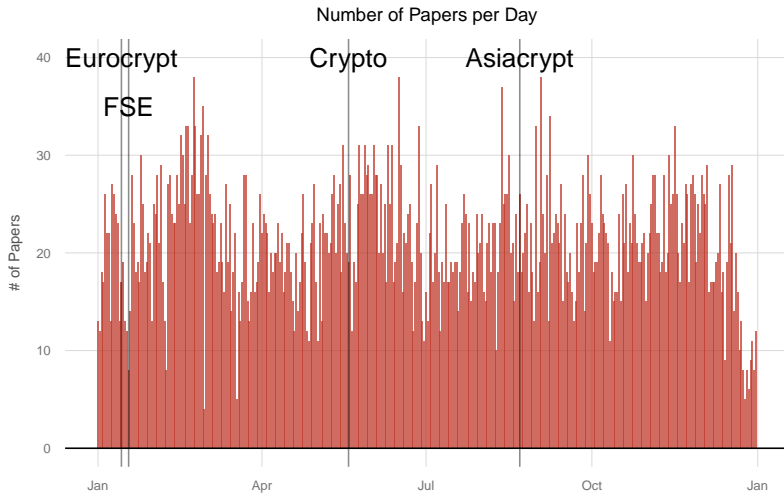
We have 61% more papers than five year ago.



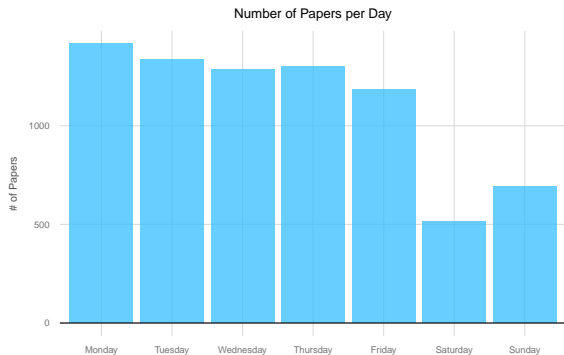
All years combined



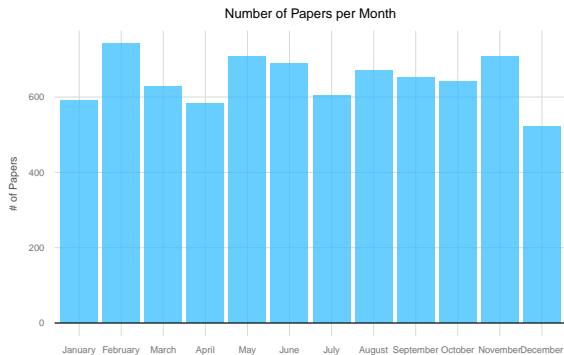
Submission Deadline



Notification



Day	Papers	Share
Monday	1415	18.29%
Tuesday	1338	17.30%
Thursday	1303	16.85%
Wednesday	1286	16.63%
Friday	1186	15.33%
Sunday	690	8.92%
Saturday	517	6.68%



Month	Papers	Share
February	741	9.58%
May	708	9.15%
November	708	9.15%
June	689	8.91%
August	670	8.66%
September	651	8.42%
October	641	8.29%
March	629	8.13%
July	603	7.80%
January	592	7.65%
April	582	7.52%
December	521	6.74%

ePrint Archive

Most popular days:

- ▶ 3rd of September (38)
- ▶ 16th of June (38)
- ▶ 23th of February (38)

ePrint Archive

Most popular days:

- ▶ 3rd of September (38)
- ▶ 16th of June (38)
- ▶ 23th of February (38)

Least popular days:

- ▶ 29th of February (4)
- ▶ 18th of March (5)
- ▶ 25th of December (5)

ePrint Archive

Most popular days:

- ▶ 3rd of September (38)
- ▶ 16th of June (38)
- ▶ 23th of February (38)

Least popular days:

- ▶ 29th of February (4)
- ▶ 18th of March (5)
- ▶ 25th of December (5)

Other:

- ▶ Valentine's day (28)

ePrint Archive

Most popular days:

- ▶ 3rd of September (38)
- ▶ 16th of June (38)
- ▶ 23th of February (38)

Least popular days:

- ▶ 29th of February (4)
- ▶ 18th of March (5)
- ▶ 25th of December (5)

Other:

- ▶ Valentine's day (28)

Fact

The average is 21.13 papers

Most submissions on a single day

- ▶ 2nd of March 2015 (12)
- ▶ Previous record: 23th of February 2012 (11).